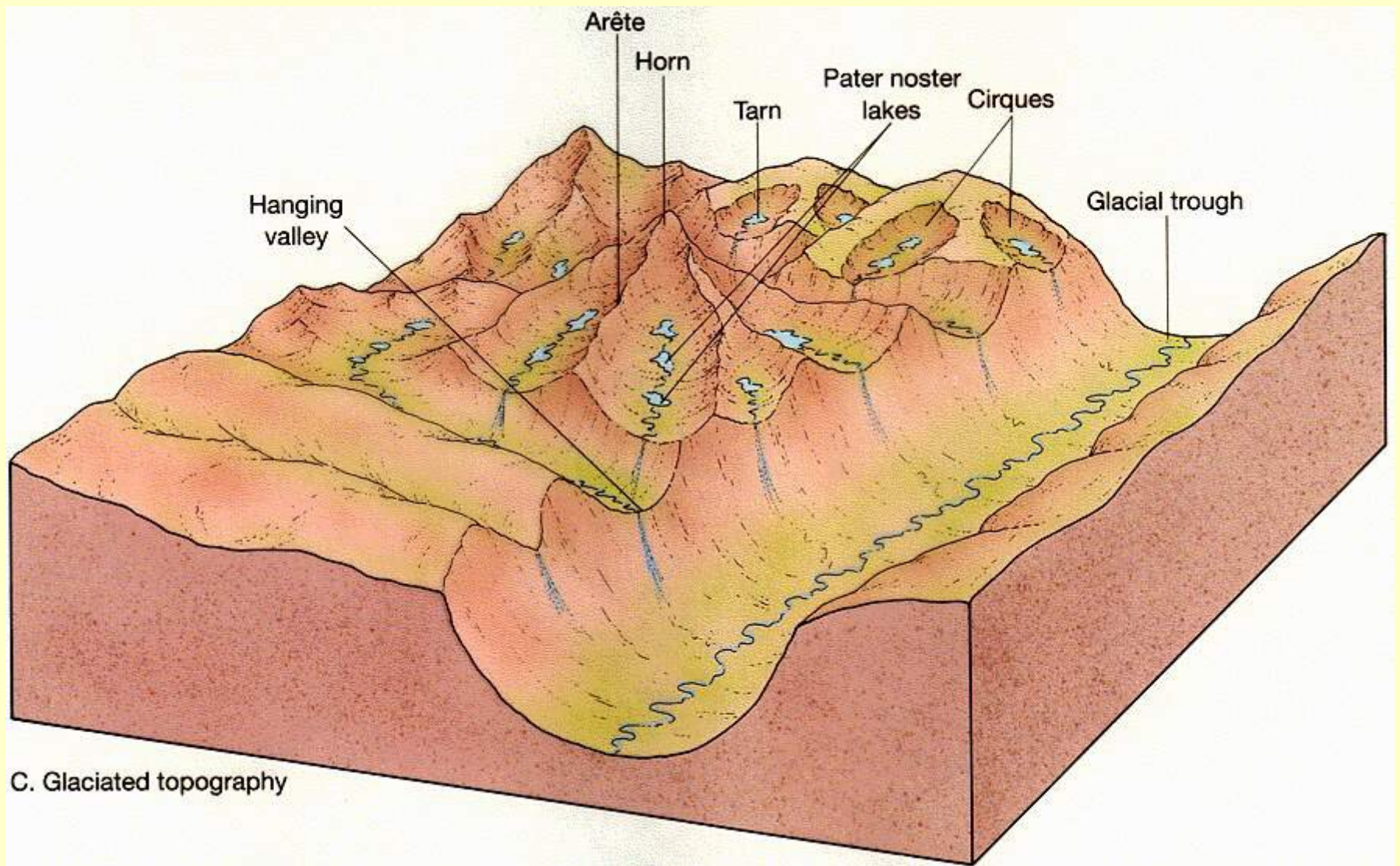


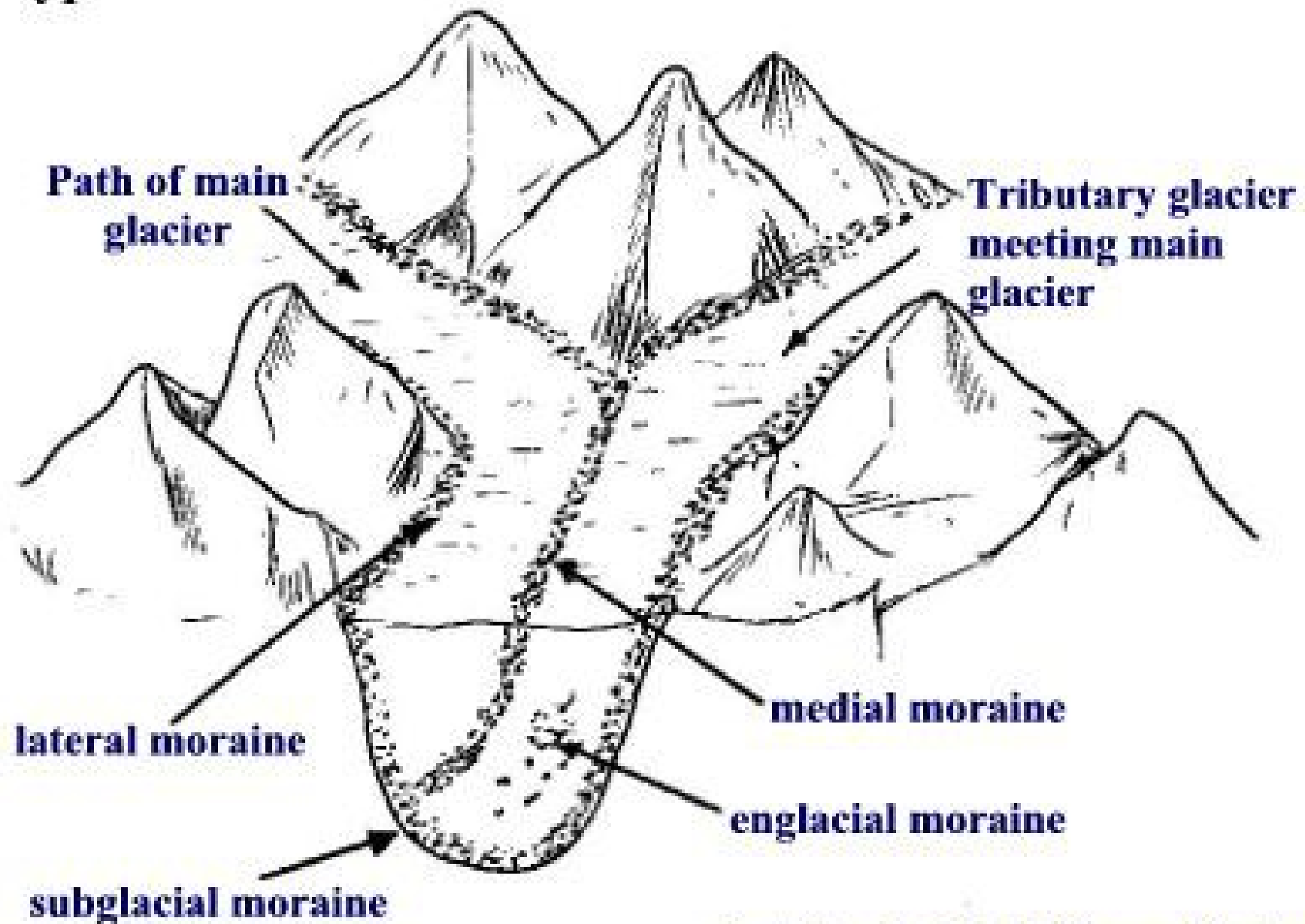
C. Glaciated topography



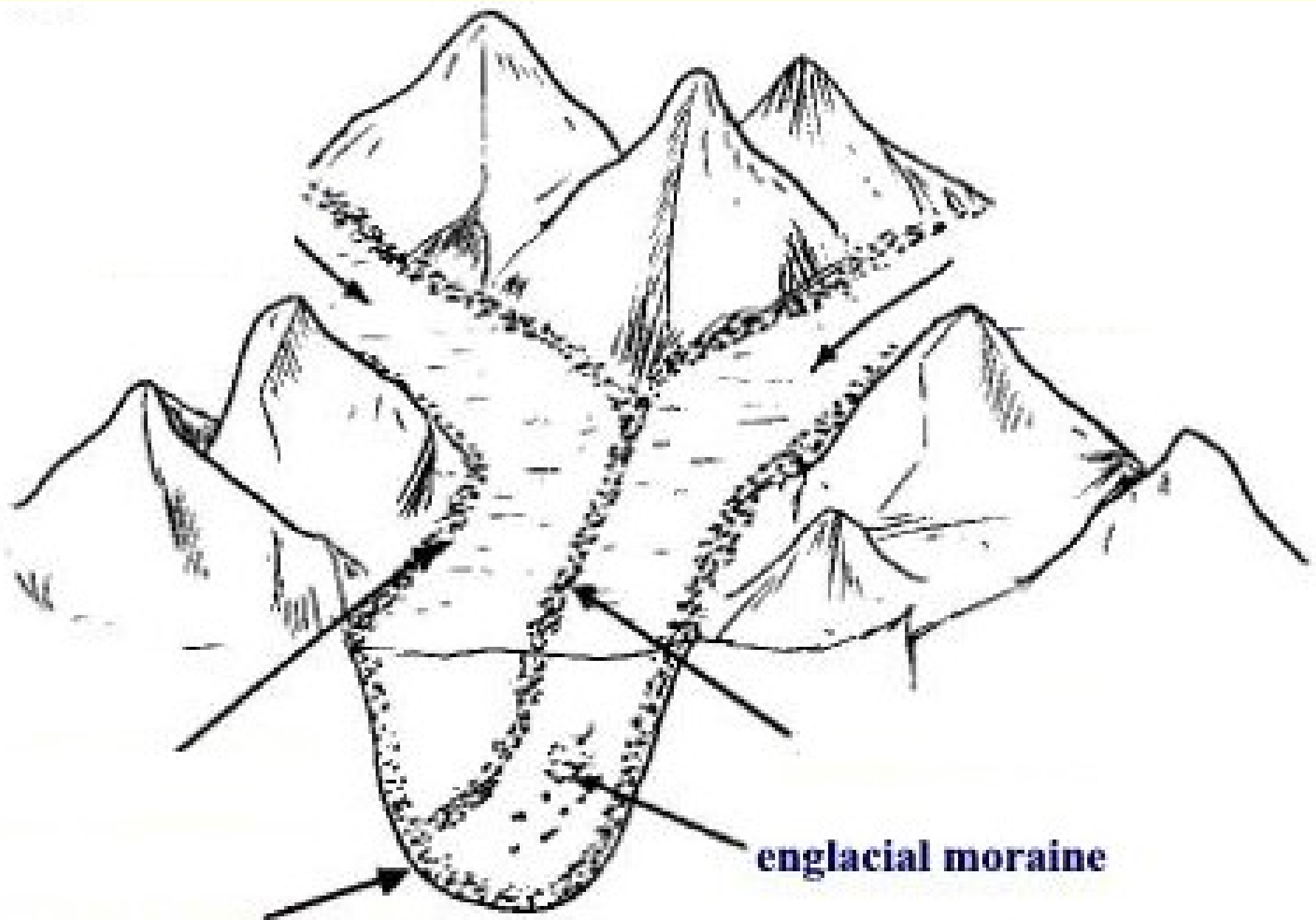


C. Glaciated topography

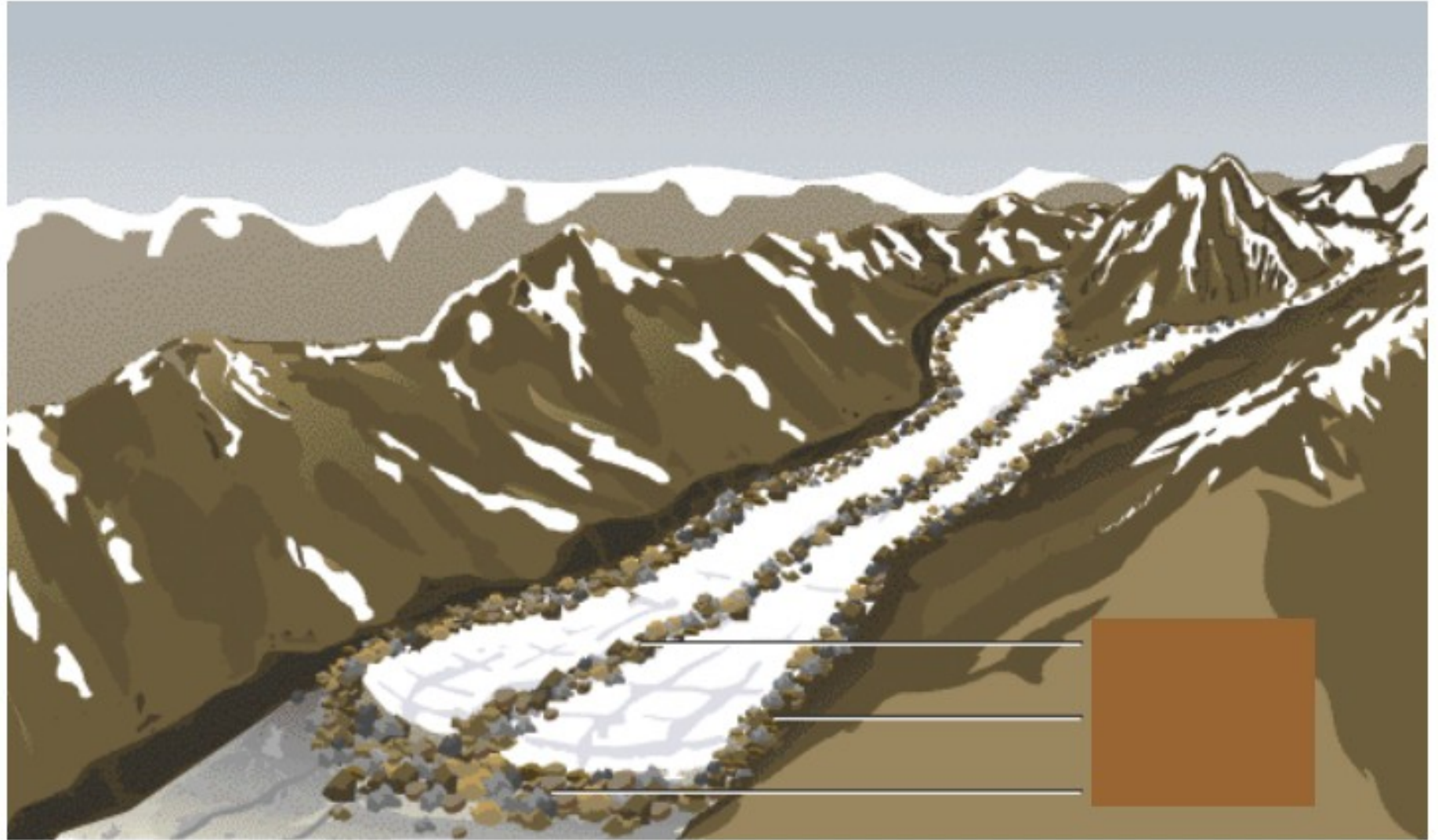
# Types of Moraine

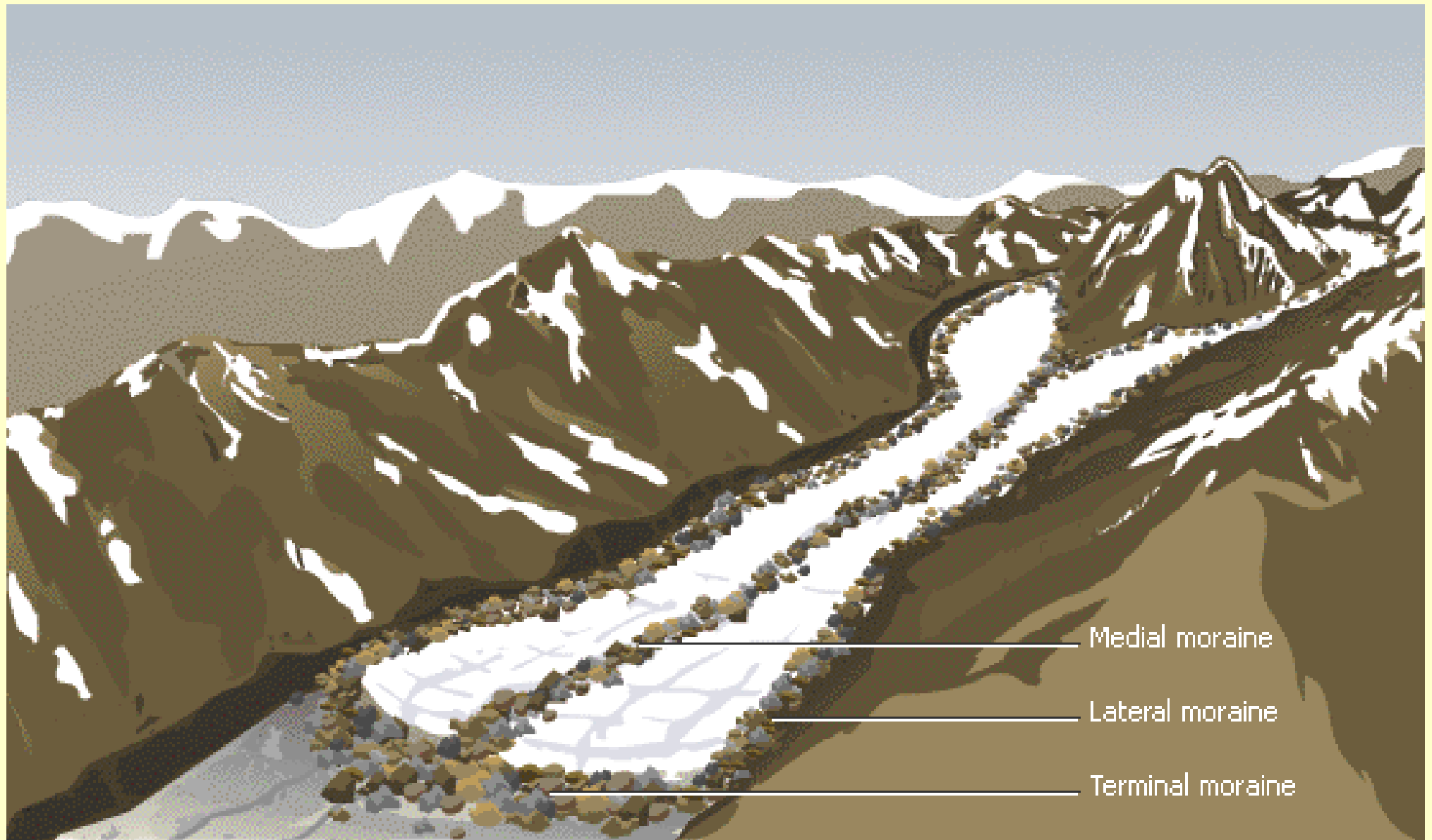


adapted from fig 6.15 p.178 Clowes and Comfort (1991)



**englacial moraine**



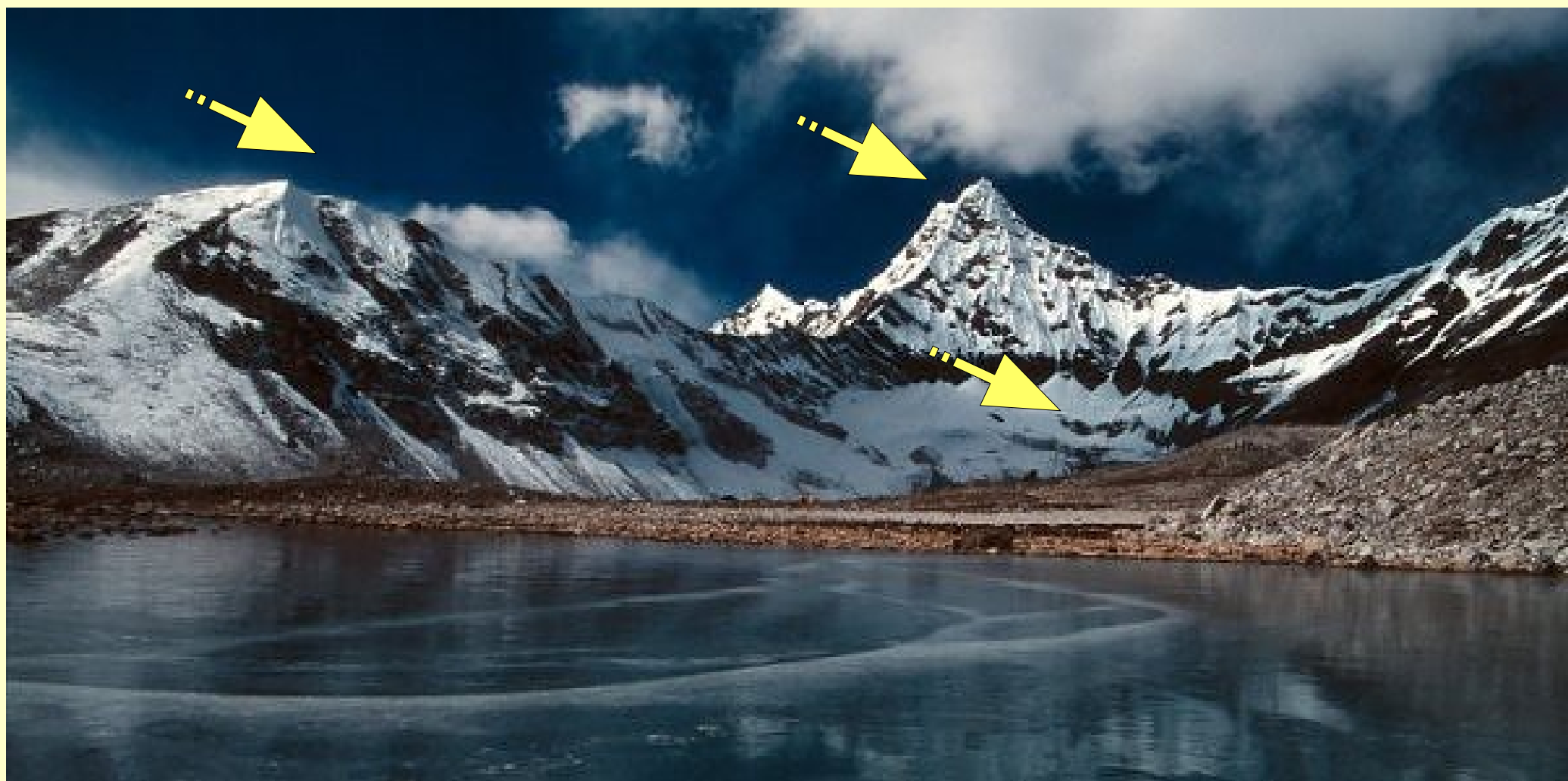




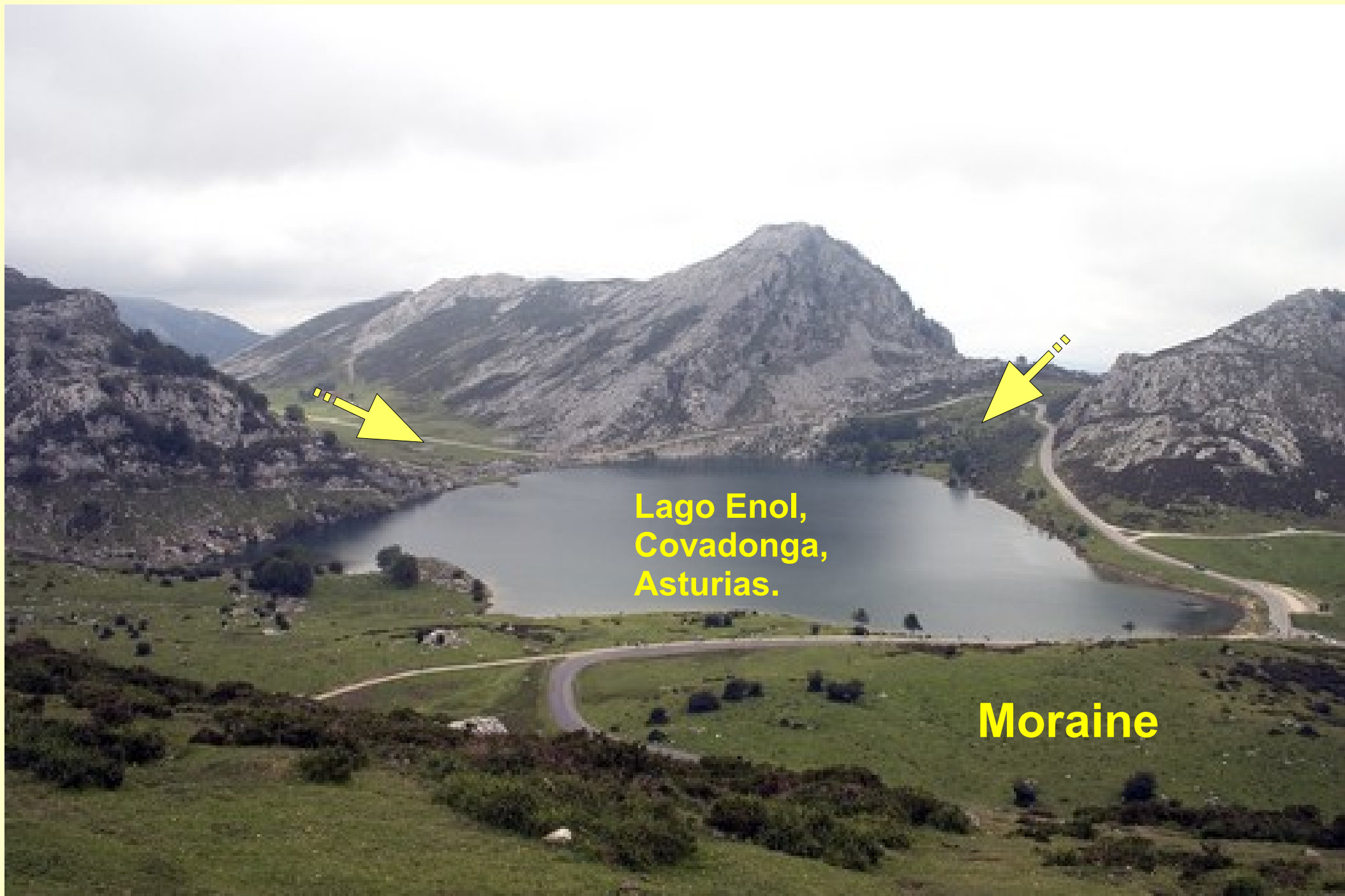




**Terminal moraine**

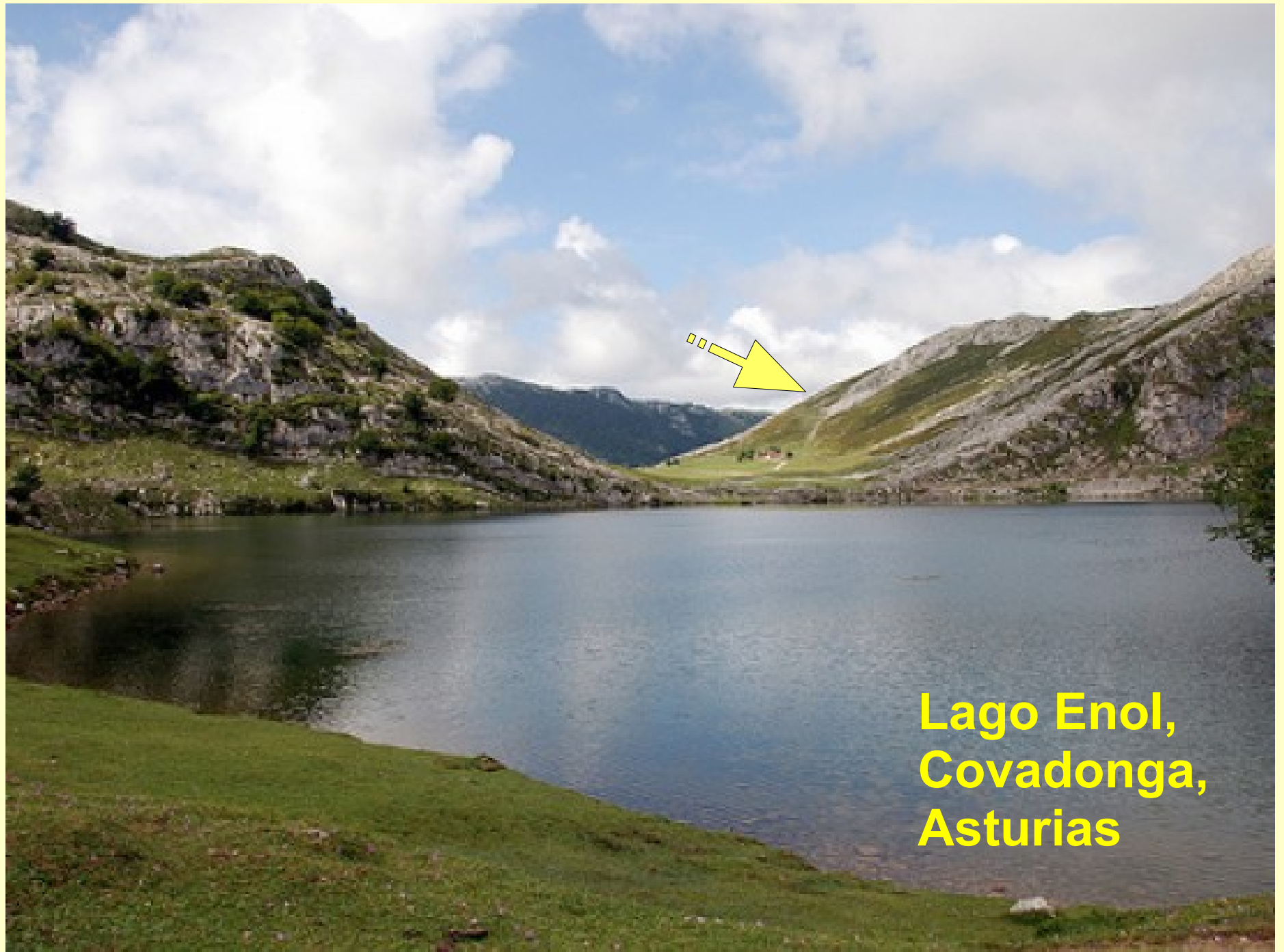






**Lago Enol,  
Covadonga,  
Asturias.**

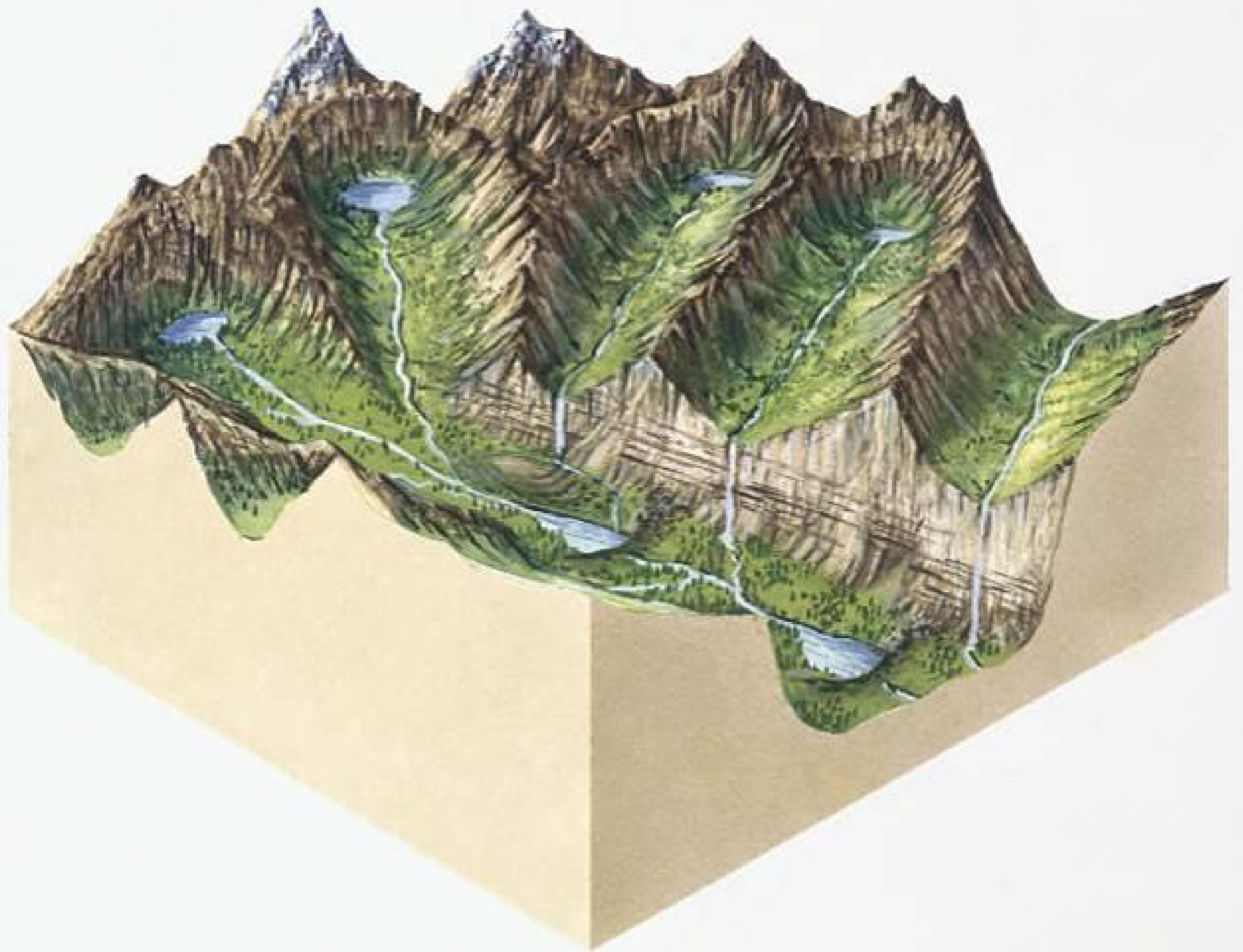
**Moraine**

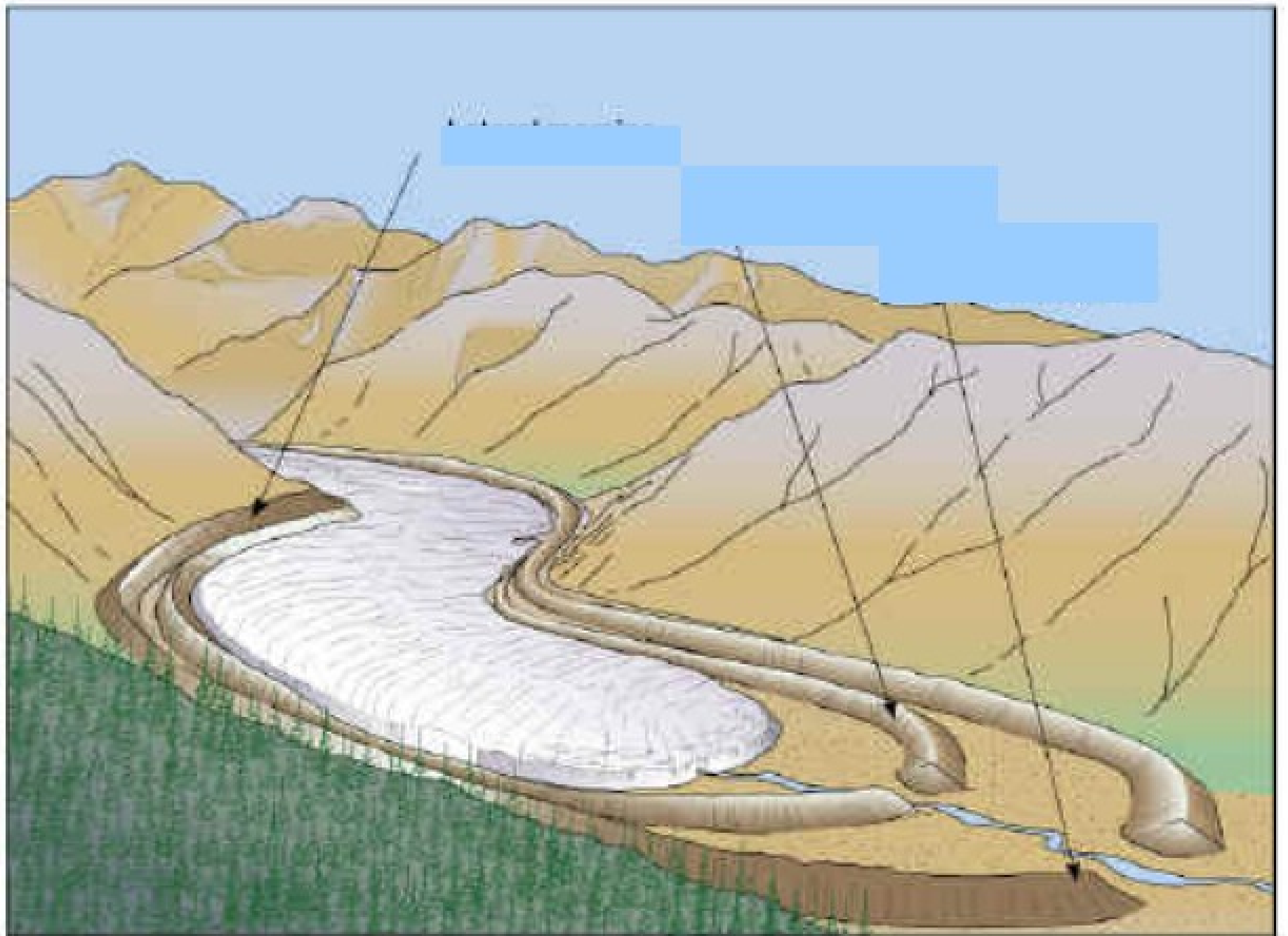


**Lago Enol,  
Covadonga,  
Asturias**









Lateral moraine

Recessional moraine

Terminal moraine

